

**ORACLE**<sup>®</sup>  
PRIMAVERA



Rid the World of Project Failure

**ORACLE**<sup>®</sup>

**Projekte erfolgreich führen – mit den richtigen Entscheidungen**

Jürgen Stobinski  
Oracle Primavera Sales Consultant

# Agenda

- Vorstellung
- Entscheidungsgrundlage
- Entscheidungshilfsmittel
- Praxisbeispiele
- Resümee



# Agenda

- **Vorstellung**
- Entscheidungsgrundlage
- Entscheidungshilfsmittel
- Praxisbeispiele
- Resümee



# Vorstellung

## Wer ist Jürgen Stobinski?

- Ausbildung zum Bau-Ing & MSc
- 10 Jahre Erfahrung in kleinen & großen Projekten



## Was ist Oracle Primavera?

- PPM Business Unit von Oracle
- Marktführer in Projekt- & Portfoliomanagement SW



# Agenda

- Vorstellung
- **Entscheidungsgrundlage**
- Entscheidungshilfsmittel
- Praxisbeispiele
- Resümee



# Entscheidungsgrundlage

Wie treffe ich die richtige Entscheidung?

Grundlage von Entscheidungen:

- Fakten, Informationen
- Trends, Analysen
- Bauchgefühl

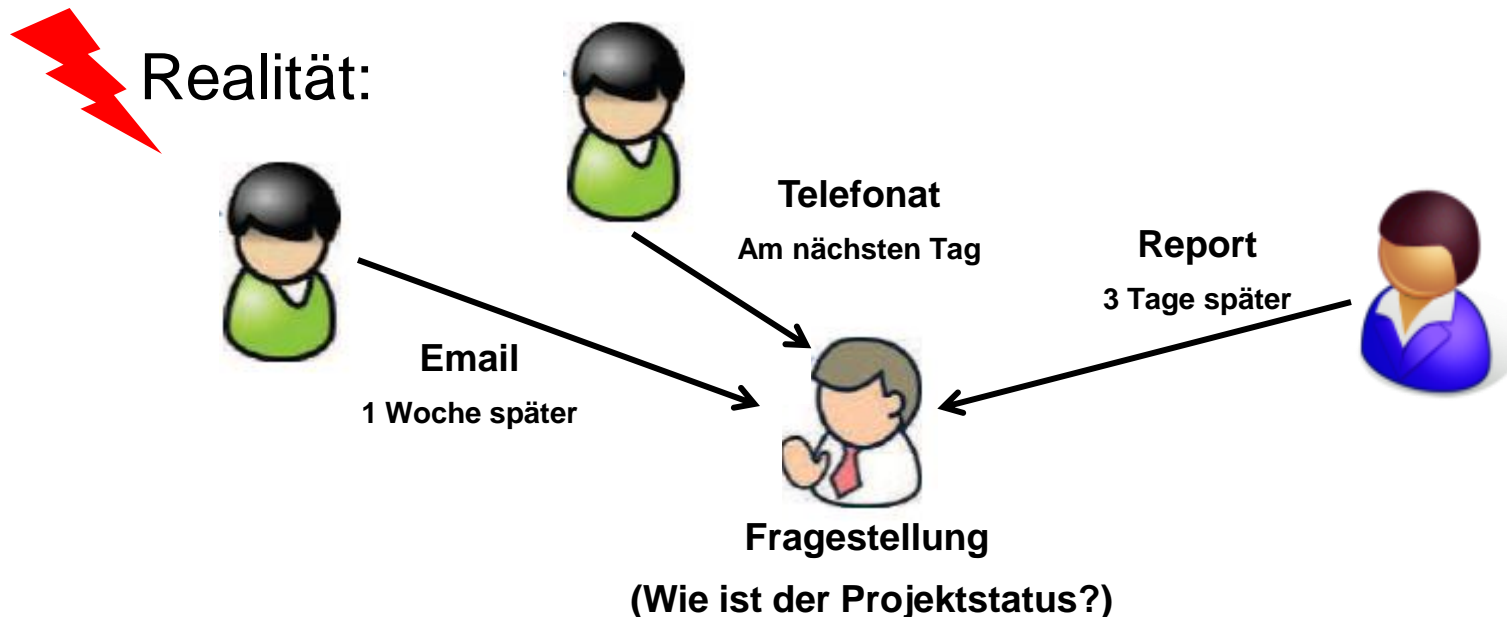


# Entscheidungsgrundlage

Wie treffe ich die richtige Entscheidung?

Der richtige Zeitpunkt für Entscheidungen:

- wenn alle Daten, in einheitlichem Format, richtiger Detailtiefe und Qualität vorhanden sind



# Entscheidungsgrundlage

Welche Eigenschaften benötige ich um die richtige Entscheidung zu treffen?



&



# Agenda

- Vorstellung
- Entscheidungsgrundlage
- **Entscheidungshilfsmittel**
- Praxisbeispiele
- Resümee



# Entscheidungshilfsmittel

Hilfsmittel für Entscheidungen:

Entscheidungsvorlagen  
(Überblicke, Statusinfos, Indikatoren für alle Projekte  
auf einer Primavera Datenbank)



**Reports**

zur Informationsverteilung

**Analysen**

zur Ursachen- und  
Auswirkungsfindung

**Project Analytics**

**eingebettet in eine unternehmensweite Business Intelligence**

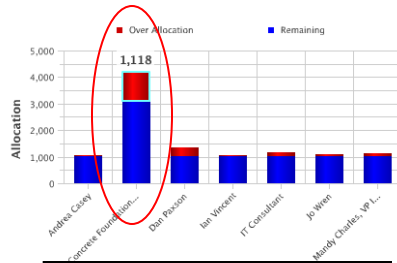
# Entscheidungshilfsmittel

- Reports:
  - Pixel-perfektes Layout mit statischem Inhalt,
  - für Reviews oder Abschlussberichte geeignet.
- Analysen:
  - Portfolio- oder Projektszenarien,
  - Ursachen- oder Auswirkungsanalysen.
- Analytics:
  - ad-hoc Fragestellungen,
  - unbegrenzte Detailtiefe und Filterbereiche.

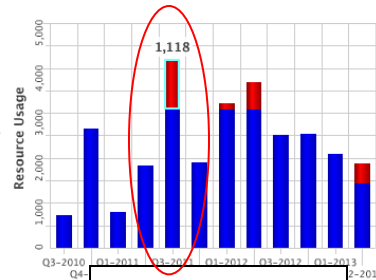
# Entscheidungshilfsmittel

## Analytics: Was heisst ad-hoc und Detailtiefe?

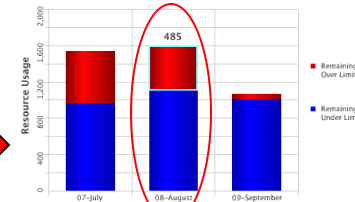
### Resource Utilization Percentage



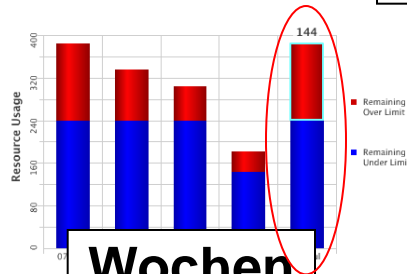
**Ressourcen**



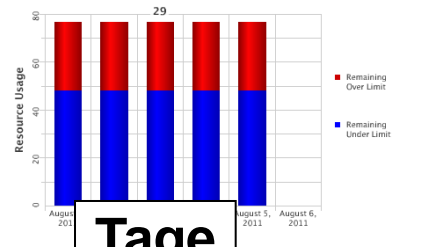
**Quartale**



**Monate**



**Wochen**



**Tage**

Utilization Percent					
Q3-2011					
Resource Name	07-Aug	14-Aug	21-Aug	28-Aug	31-Jul
Concrete Foundation Subcontractor	159.9%	139.9%	126.5%	126.5%	159.9%

[Return](#) - [Back](#) - [Refresh](#) - [Print](#) - [Download](#) - [Add to Briefing Book](#) - [Create Bookmark Link](#)

Utilization Percent					
Q3-2011					
Resource Name	August 1, 2011	August 2, 2011	August 3, 2011	August 4, 2011	August 5, 2011
Concrete Foundation Subcontractor	159.9%	159.9%	159.9%	159.9%	159.9%

[Return](#) - [Back](#) - [Refresh](#) - [Print](#) - [Download](#) - [Add to Briefing Book](#) - [Create Bookmark Link](#)

# Agenda

- Vorstellung
- Entscheidungsgrundlage
- Entscheidungshilfsmittel
- **Praxisbeispiele**
- Resümee



# Praxisbeispiele

## Report - Projektstatusbericht

**ORACLE**

As of: 05/01/2011

### Project Status Report for: 4G Tablet Project (PROD00414)

SPONSOR <b>Pederson</b>	BUSINESS SEGMENT <b>1010300</b>	PROJECT MANAGER <b>Cortez</b>	CURRENT PHASE <b>Implementation</b>	LOCATION <b>China</b>	
DESCRIPTION <b>This project will introduce our first 4G tablet line.</b>					
START <b>02/01/2011</b>	FINISH	TARGET FINISH <b>09/13/2011</b>	% COMPLETE <b>55 %</b>	ACTIVITIES COMPLETED <b>8 of 13</b>	PROJECT SCORE <b>62</b>
APPROVED BUDGET <b>\$470,708</b>	COST TO DATE <b>\$252,289</b>	AT COMPLETION <b>\$466,127</b>	COST VARIANCE <b>\$4,581</b>	LABOR TO DATE <b>1950.6 h</b>	LABOR VARIANCE <b>58.8 h</b>

#### PRIORITY ISSUES

1 priority of 3 issues

Critical Bugs Identified	
--------------------------	--

#### OPEN RISKS

0 open of 8 risks

#### NOTEBOOKS

Recent Accomplishments	Gary has published the final engineering documentation to UCM.
Sponsor Feedback	We hosted an executive roundtable and this project initiative was an exciting topic of conversation.

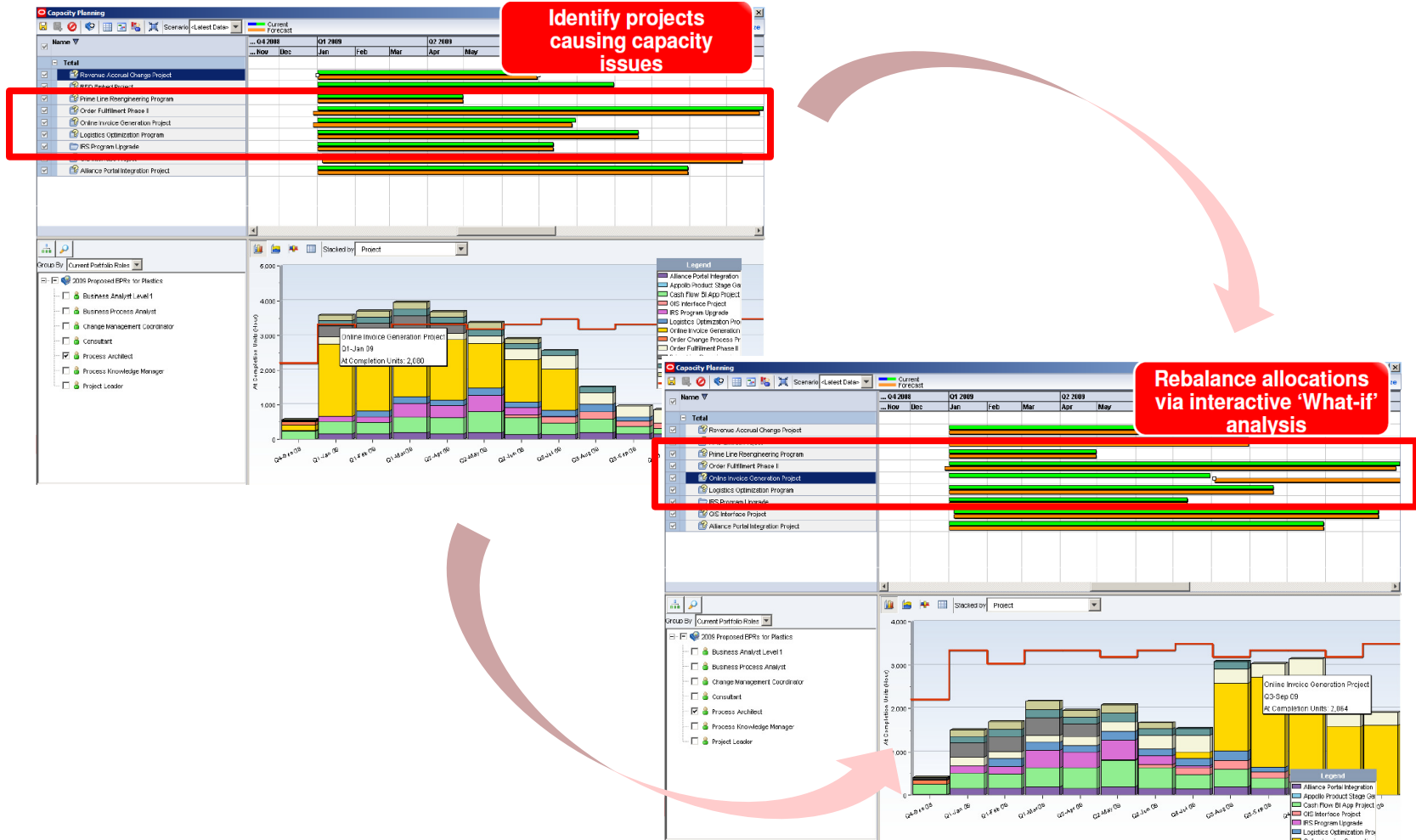
#### MILESTONES

	Date	Status
Gate 1 - Idea Screen	2/8/2011	Completed
Gate 2 - Second Screen	3/1/2011	Completed
Gate 3 - Go to Development	4/26/2011	Completed
Gate 4 - Go to Testing	7/26/2011	Not Started
Gate 5 - Go to Launch	9/13/2011	Not Started

**ORACLE**

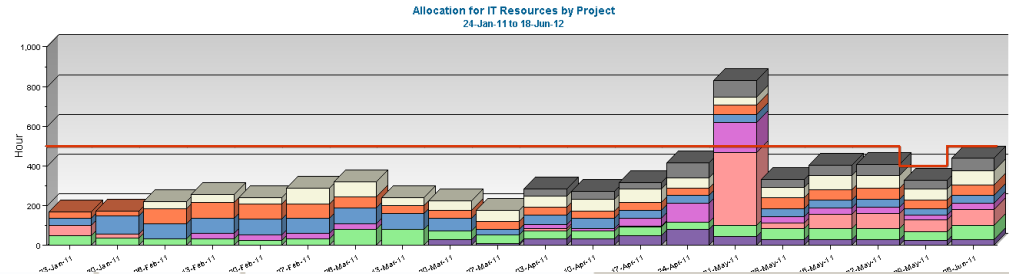
# Praxisbeispiele

## Analyse – Kapazitätsoptimierung



# Praxisbeispiele

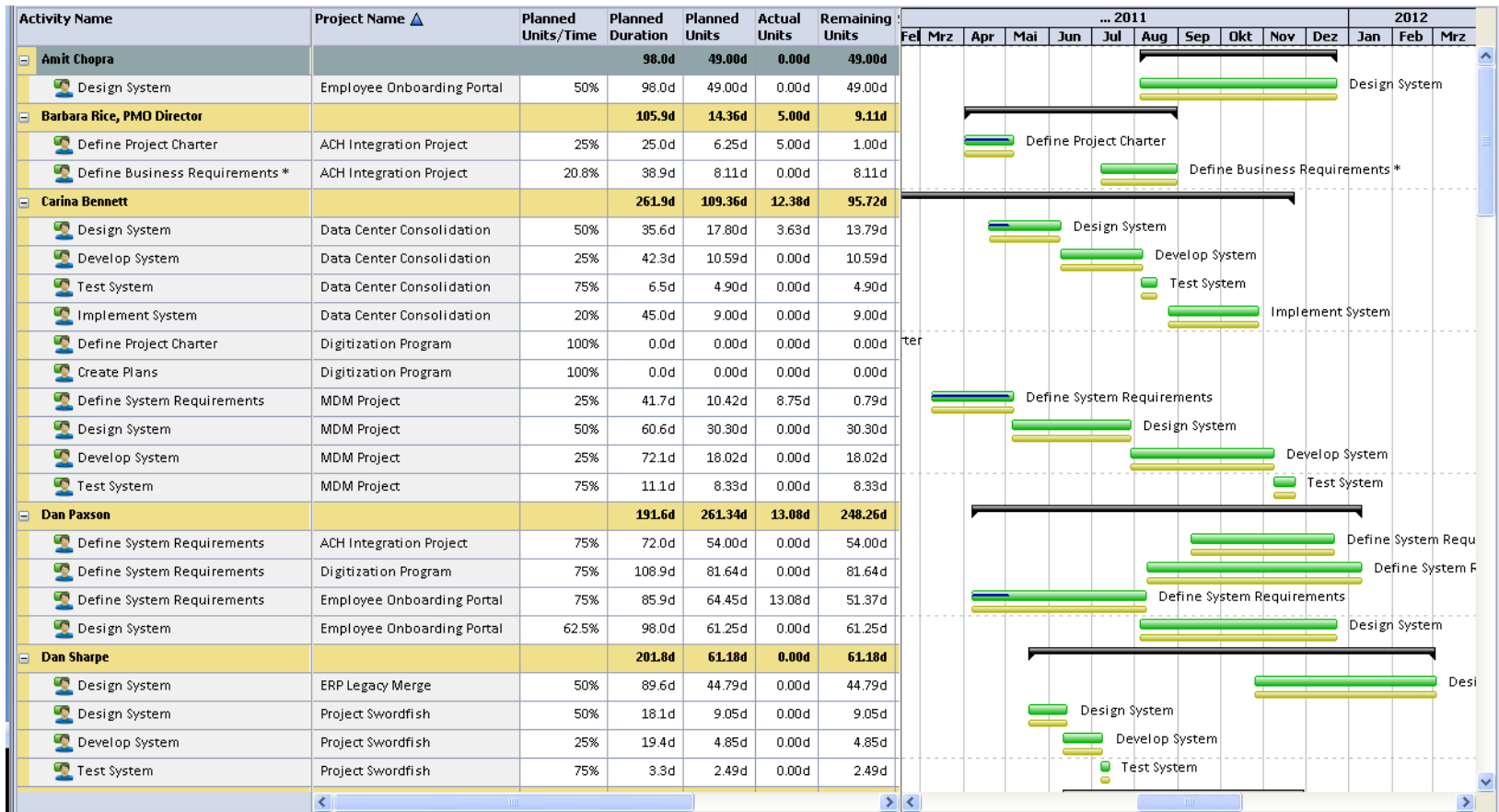
## Analyse – IT Ressourcenbedarf (Headcount Planung)



Resource Name	01-Apr-11	01-May-11	01-Jun-11	01-Jul-11	01-Aug-11	01-Sep-11
<b>Strategic Objective: Improved Customer Satisfaction</b>	2	3	3	2	4	
+ Role: Business Analyst	0	0	0	0	0	0
+ Role: DBA			0	0	1	
+ Role: Developer	0	1	1	1	1	1
+ Role: Enterprise Architect	1	1	1	1	1	1
+ Role: Project Management Office						0
+ Role: Project Manager	0	0	0	0	0	0
+ Role: Quality Assurance			0	0	0	1
+ Role: Relationship Manager						0
+ Role: Trainer						0
<b>Strategic Objective: Reduced Cycle Time</b>	1	1	1	2	2	
+ Role: Business Analyst	1	0	0	1	1	1
+ Role: Project Management Office	0	0	0	0	0	0
+ Role: Project Manager	1	1	1	1	1	1
+ Role: Relationship Manager				0	0	1
<b>Strategic Objective: Regulatory Compliance</b>	1	2	3	3	3	
+ Role: Business Analyst			0	1	0	0
+ Role: Developer						0
+ Role: Enterprise Architect	1	1	1	1	1	2

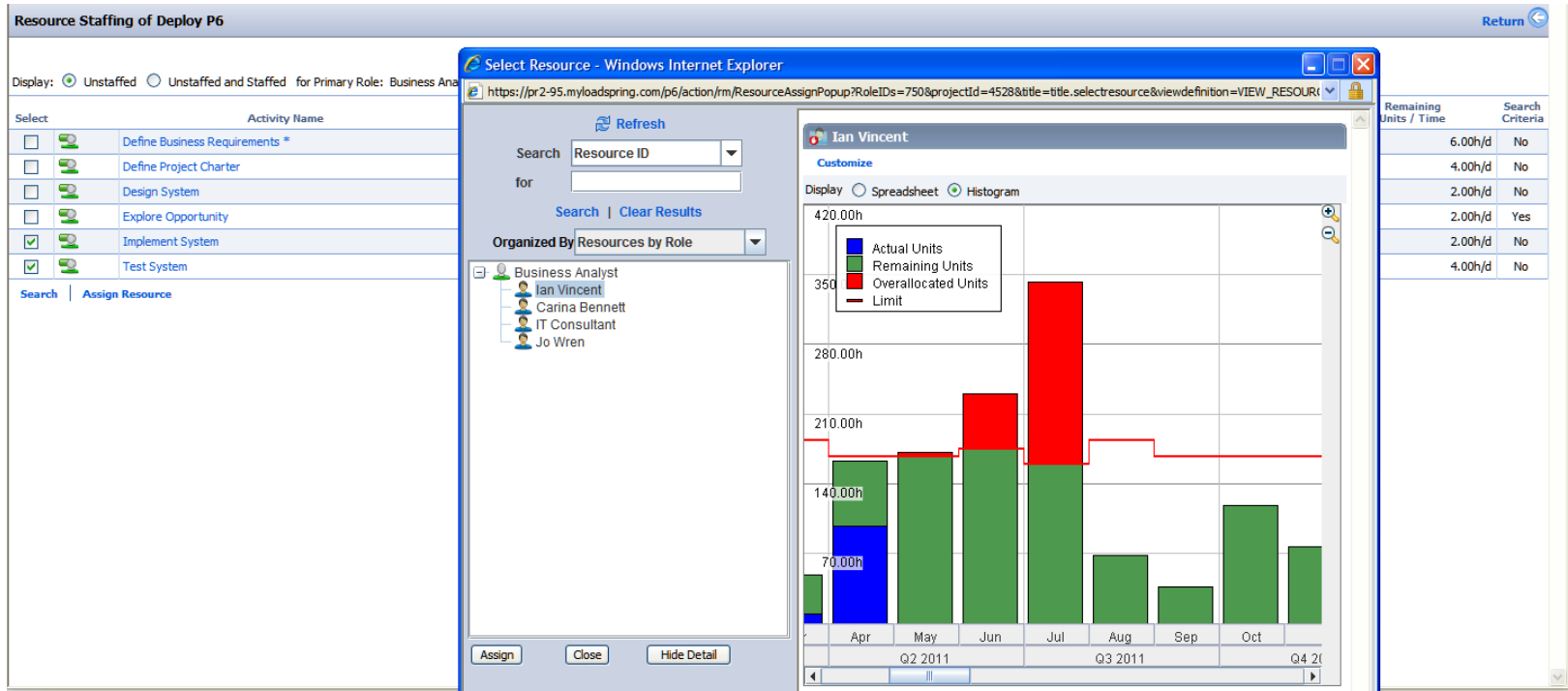
# Praxisbeispiele

## Analyse – IT Abteilung: Ressourceneinteilung für Projekte



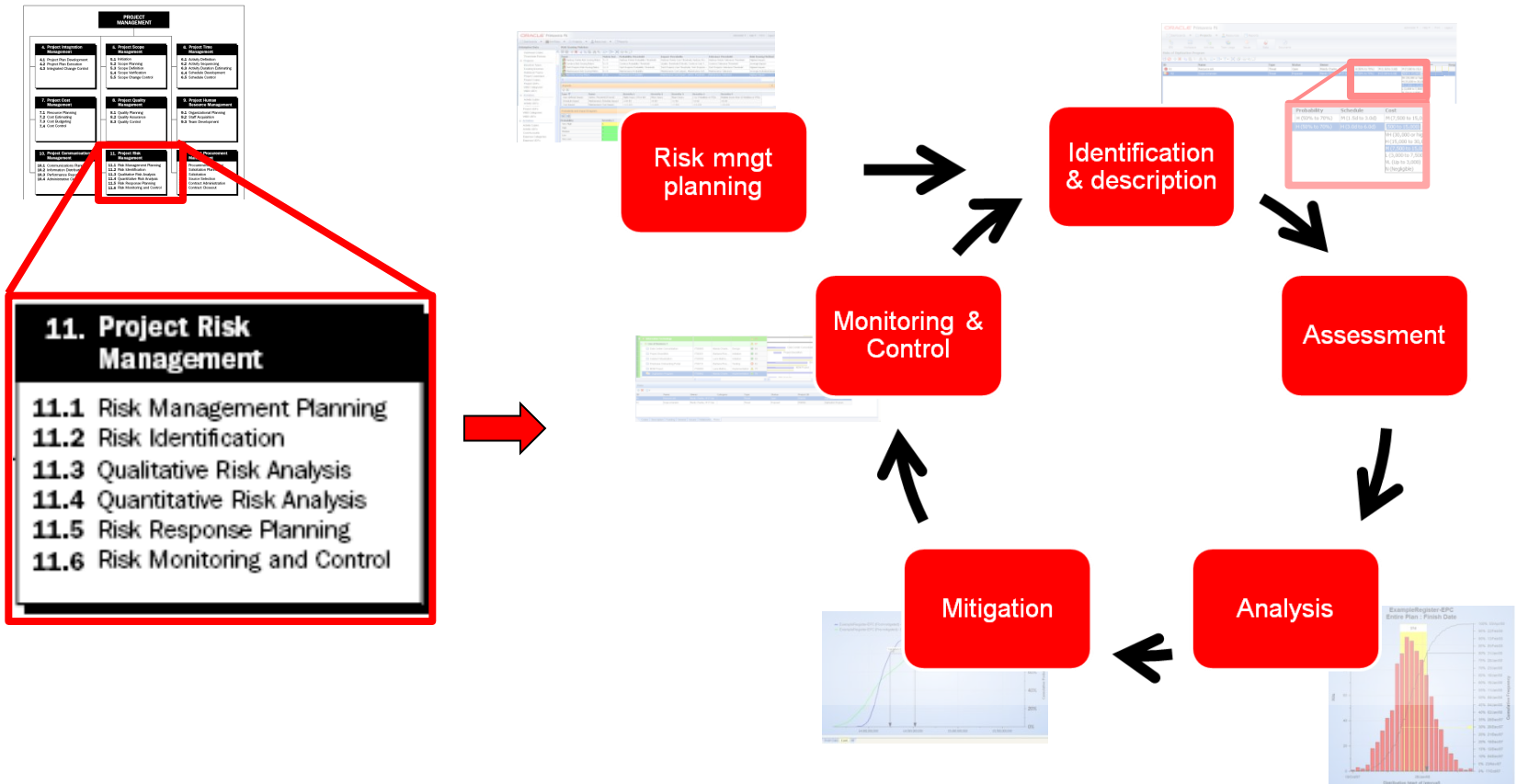
# Praxisbeispiele

## Analyse – IT Ressourcenauslastung / -zuweisung



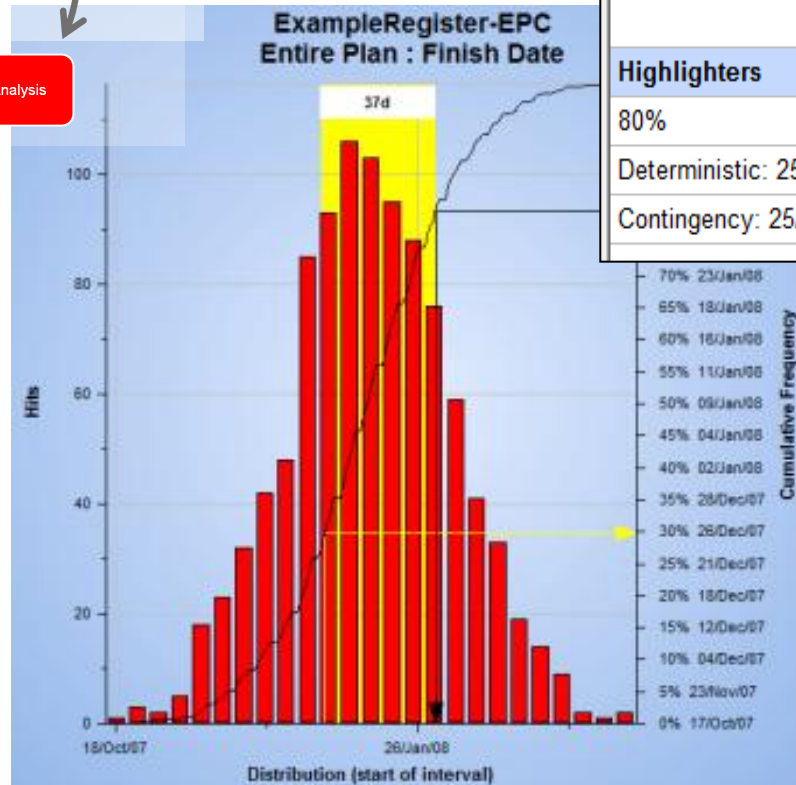
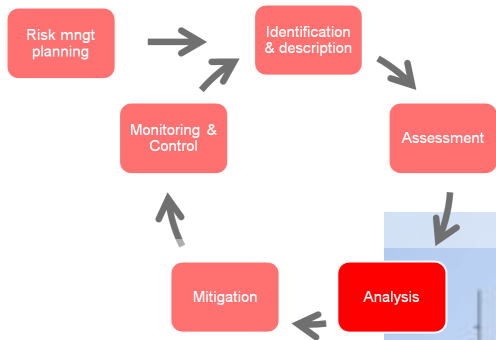
# Praxisbeispiele

## Analyse – Monte-Carlo basierte Risikoanalyse



# Praxisbeispiele

## Analyse – Monte-Carlo basierte Risikoanalyse



Statistics	
Minimum:	17/Oct/07
Maximum:	03/Apr/08
Mean:	08/Jan/08
Highlighters	
80%	31/Jan/08
Deterministic: 25/Dec/07	30%
Contingency: 25/Dec/07 - 80%	37d

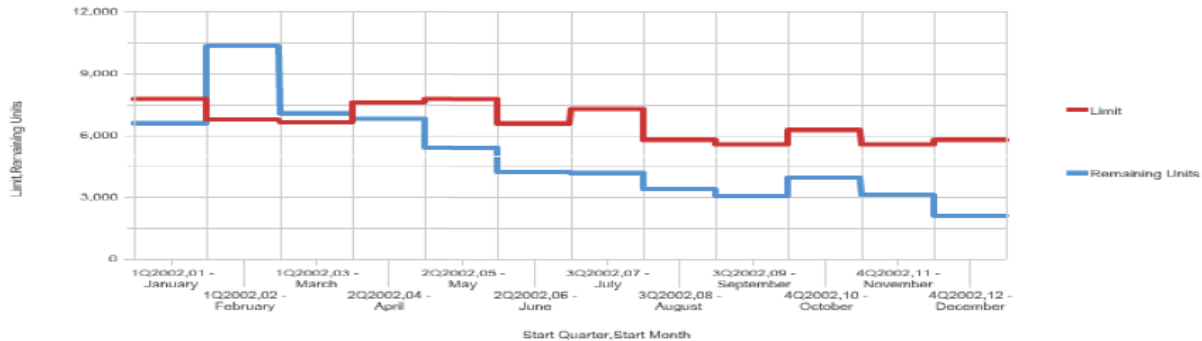
# Praxisbeispiele

## Analytics - Ressourcenstatus

Analyze project, program & resource performance across the enterprise

	2002			
	1Q2002	2Q2002	3Q2002	4Q2002
Actual Units	14,882	298	585	190
Planned Units	40,952	17,487	12,050	11,083
Remaining Units	23,994	16,484	10,805	9,218

and Remaining Units is greater than 0  
and Start Year is equal to 2002

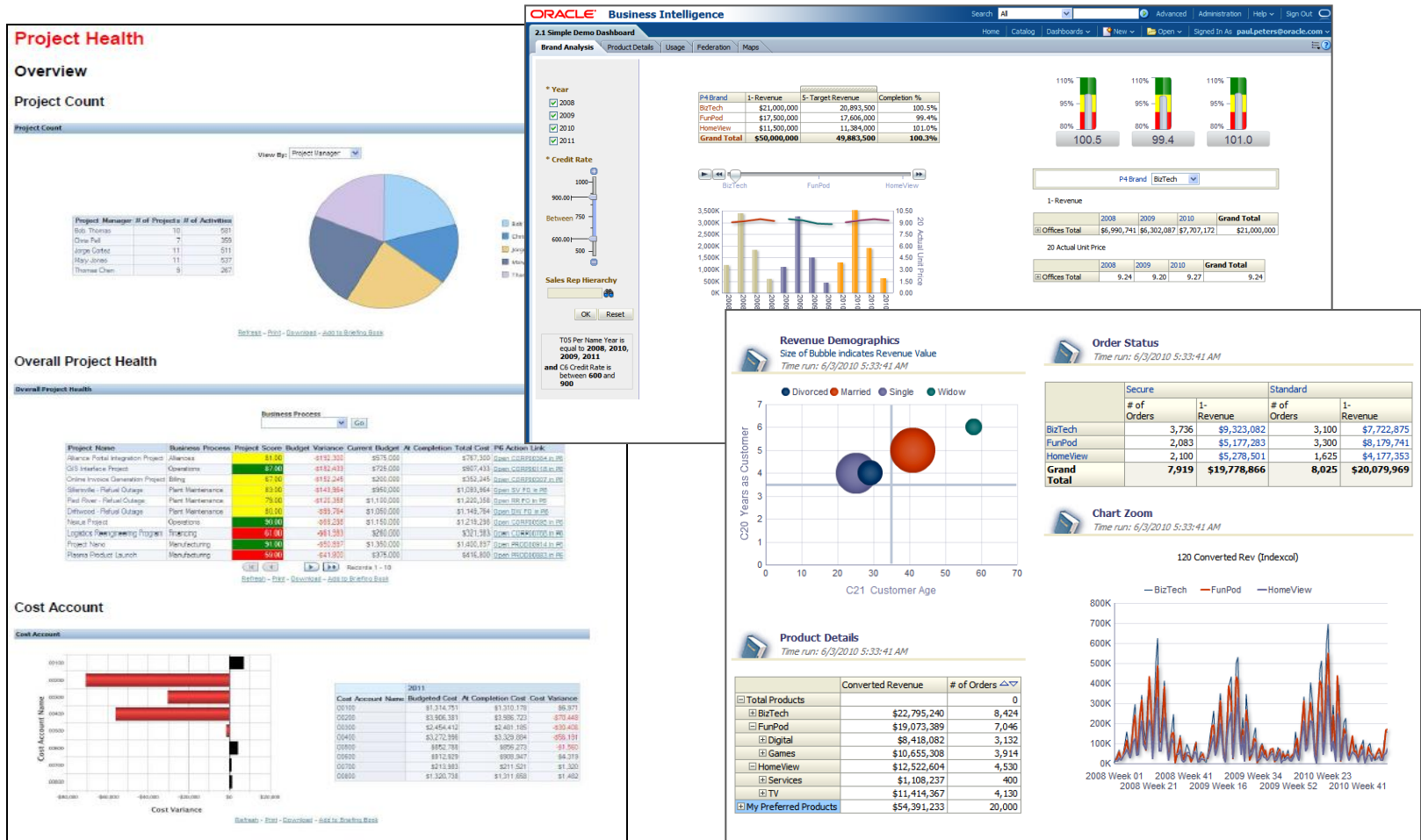


Primary Role	Resource Type	Utilization											
		2002 1Q2002			2Q2002			3Q2002			4Q2002		
		1	2	3	4	5	6	7	8	9	10	11	12
ASP Developer	Labor	18%	118%	126%	126%	126%	132%	126%	126%	126%	126%	100%	95%
Business Systems Analyst	Labor	46%	100%	104%	66%	66%	72%	66%	66%	63%	54%	75%	59%
Database Administrator	Labor	25%	114%	109%	81%	75%	80%	75%	75%	75%	75%	61%	48%
Implementation Consultant	Labor	237%	178%	75%	75%	59%	213%	75%	75%	75%	75%	87%	130%
Integration Specialist	Labor	24%	18%		21%	55%	32%						
Junior Java Programmer	Labor	14%	263%		2%	10%		13%			18%		
Project Manager	Labor	35%	50%	20%	34%	23%	26%	28%	24%	16%	29%	29%	18%
Project Sponsor	Labor	73%		22%	47%								
Quality Assurance Manager	Labor	132%	288%	163%	143%	87%	57%	61%	41%	31%	44%	35%	26%
Senior Java Programmer	Labor	203%	182%	283%	287%	109%	117%	120%	79%	132%	138%	114%	16%
Software Developer	Labor	175%	333%	83%	117%	101%	70%	51%	41%	33%	55%	25%	1%
System Administrator	Labor	173%	369%	225%	213%	104%	154%	107%	154%	149%	170%	130%	58%
	Equipment	45%	6%	47%	22%	14%	17%	6%					
	Material												
Client / Server Developer	Labor		90%	100%	100%	100%	100%	100%	100%	100%	100%	100%	90%

[Return](#) - [Create Bookmark Link](#)

# Praxisbeispiele

## Analytics – Beispiele von Cockpits:



# Praxisbeispiele

## Overall Project Health

### Overall Project Health

Business Process

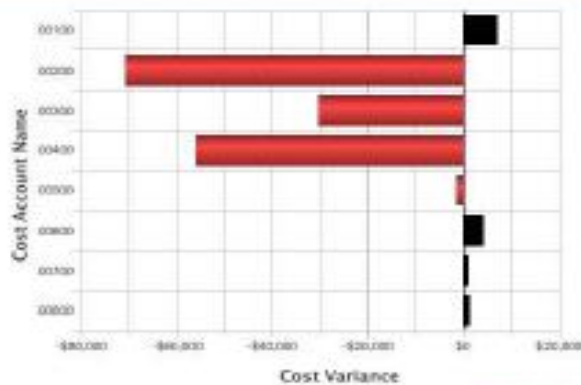
Project Name	Business Process	Project Score	Budget Variance	Current Budget	At Completion Total Cost	PG Action Link
Alliance Portal Integration Project	Alliances	81.00	-\$192,300	\$575,000	\$787,300	<a href="#">Open CORP0004 in PE</a>
GIS Interface Project	Operations	87.00	-\$182,433	\$725,000	\$907,433	<a href="#">Open CORP0118 in PE</a>
Online Invoice Generation Project	Billing	87.00	-\$152,245	\$200,000	\$352,245	<a href="#">Open CORP0007 in PE</a>
Silerzville - Refuel Outage	Plant Maintenance	83.00	-\$143,984	\$950,000	\$1,093,984	<a href="#">Open SV PD in PE</a>
Pied River - Refuel Outage	Plant Maintenance	79.00	-\$120,358	\$1,100,000	\$1,220,358	<a href="#">Open RR PD in PE</a>
Dittwood - Refuel Outage	Plant Maintenance	80.00	-\$55,794	\$1,050,000	\$1,145,794	<a href="#">Open DR PD in PE</a>
Newse Project	Operations	90.00	-\$89,298	\$1,150,000	\$1,219,298	<a href="#">Open CORP0082 in PE</a>
Logistics Reengineering Program	Financing	61.00	-\$61,383	\$280,000	\$321,383	<a href="#">Open CORP0103 in PE</a>
Project News	Manufacturing	91.00	-\$50,857	\$1,350,000	\$1,400,857	<a href="#">Open PROJ00914 in PE</a>
Plasma Product Launch	Manufacturing	80.00	-\$41,900	\$375,000	\$416,900	<a href="#">Open PROJ0083 in PE</a>

Records 1 - 10

[Refresh](#) - [Print](#) - [Download](#) - [Add to Briefing Book](#)

## Cost Account

### Cost Account



Cost Account Name	Budgeted Cost	At Completion Cost	Cost Variance
00100	\$1,314,751	\$1,310,178	-\$4,573
00200	\$3,906,381	\$3,986,723	-\$80,342
00300	\$2,454,412	\$2,481,185	-\$26,773
00400	\$3,272,956	\$3,329,884	-\$56,928
00500	\$852,788	\$856,273	-\$3,485
00600	\$912,929	\$908,947	\$3,982
00700	\$213,883	\$211,521	\$2,362
00800	\$1,320,738	\$1,311,658	\$9,080

[Refresh](#) - [Print](#) - [Download](#) - [Add to Briefing Book](#)

# Praxisbeispiele

## Analytics - einfache ad-hoc Analyse & Report Erstellung

The screenshot displays the Oracle Analytics interface for a report titled "P6 Resource Assignment". The interface is divided into several sections:

- Criteria**: A top navigation bar with tabs for "Criteria", "Results", "Prompts", and "Advanced".
- Columns**: A left-hand pane showing a tree view of available columns under categories like "Time", "Calendar", "Financial Period", "EPS", "WBS", "Portfolio", "Project", and "General".
- Ad-hoc Analysis**: A prominent red callout box with white text.
- Columns Selection**: A table with columns "Calendar", "General", "Codes", and "Units". Each column contains a list of selected fields with associated icons for sorting, formulas, and filters. For example, under "Calendar", "Day Date" and "Month Name" are selected. Under "General", "Project Name" is selected. Under "Codes", "Department" is selected. Under "Units", "Budgeted Units" and "Actual Units" are selected.
- Filters**: A section below the columns table with a text input field containing the filter: "Day Date is between 10/1/2010 12:00:00 AM and 04/30/2011 12:00:00 AM". Below this are buttons for "Save Filter...", "Remove Filters", and "Combine with Similar Request".
- Buttons**: "Display Results" and "Remove All" buttons are located below the columns table.

A red arrow points from the "Filters" section back to the "Columns" selection pane, indicating the relationship between the filter and the selected data.

# Agenda

- Vorstellung
- Entscheidungsgrundlage
- Entscheidungshilfsmittel
- Praxisbeispiele
- Resümee



# Resümee

Auf Basis von einer einheitlichen Datenbasis

- ad-hoc Analysen erstellen können
- Ursachen im Detail identifizieren (drill down)
- Trends frühzeitig erkennen können
- ohne Aufwand neue Reports/Analysen erstellen

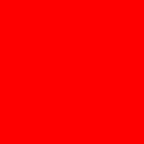
um mit ...



&



die richtigen Entscheidungen zu treffen!






The preceding is intended to outline our general product direction. It is intended for information purposes only, and may not be incorporated into any contract. It is not a commitment to deliver any material, code, or functionality, and should not be relied upon in making purchasing decisions. The development, release, and timing of any features or functionality described for Oracle's products remains at the sole discretion of Oracle.



**JUERGEN STOBINSKI | Senior Sales Consultant**  
**Mobile: +49 173 5909656**  
**Oracle Primavera Global Business Unit**

**ORACLE Deutschland B.V. & Co. KG**



-  **Network** with Oracle Primavera on LinkedIn
-  **Follow** Oracle Primavera on Twitter
-  **Share** your thoughts on Facebook

# Hardware and Software

ORACLE®

# Engineered to Work Together